



# Contents

About KOMtech

**1** Chairman's Message

**3** Editorial Note

**5** **An Integrated System for Improving Geotechnical Performance of Jackup Rig Installation**

A new instrumentation technology integrated with the Jackup to assist operators with decision making to avoid geotechnical hazards

**19** **Design of a DP2 Drillship Power Plant** Load analyses with different operational modes are employed to evaluate the vessel power plant

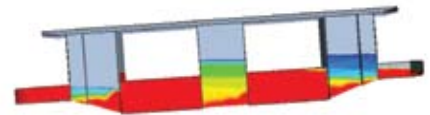
**31** **Dedicated Cable Laying Vessels for Future Wind Farm Development** KOMtech has developed two types of dedicated cable laying vessels for the demands of future wind farms

**41** **Numerical Simulation for Ship Side Launching**

Numerical Simulation of ship side launching using a CFD software coupled with a user defined program

**47** **CFD-based Resistance and Propulsion Prediction for Wind Turbine Installation Jackup Vessels and Semisubmersibles**

The high accuracy of the present CFD simulation is promising for the development of numerical towing tank techniques for efficient offshore and marine applications



**59** **Airgap and Wave Run-up Prediction for Semisubmersibles Using the CFD Simulation Approach** An effective tool to predict the airgap and wave run-up response in extreme sea conditions

**69** **Nonlinear Control of an Active Heave Compensation System**

A nonlinear controller for the active heave compensation system is designed using backstepping technology

**79** **Ice-Induced Vibrations of Slender Offshore Structures**

A review of the current trends and challenges to understand the mechanism of ice-induced vibrations of slender offshore structures

**87** **A New Pipe Handling Approach for a Deepwater Slim Drillship**

A new pipe handling approach is developed to integrate with, and enhance, the operational capabilities of the slim drillship



**97** **Revisiting the Grouted Connection** KOMtech has revisited the grouted connection for use in self installing platforms, wind turbine foundations and extendable draft semi connections

- 105 Emissions from Ships: Upcoming Regulations and Their Implications** A look at recent trends likely to affect environmental regulations and potential mitigation measures and technologies which may allow the industry to conform these regulations
- 115 LNG Regasification Selection System** LNG regasification system selection methodology for offshore applications using the KOMtech in-house design master program
- 123 Re-condensing Systems for LNG Boil Off Gas** Various technical solutions for managing BOG are reviewed for the purpose of optimal selection based on technical and commercial aspects
- 131 Offshore Oil & Gas Produced Water Treatment Technologies: An Overview** Strict new environmental regulations are driving a relook at the management of produced water
- 141 Energy Audit** An important first step in the overall process of reducing energy costs and carbon emissions

## Editorial Note

This marks the third publication of our Technology Review. As with last years review, this publication highlights some continued research as well as some new research directions of KOMtech. Continuing areas of research include wind turbine installation vessels, the slim drillship, LNG systems and research into arctic structures. We are also pleased to have new papers on a diverse range of topics including cable laying vessels, control systems and a geotechnical investigation system designed to further enhance Keppels well established Jackup designs.

These papers present a snapshot of the ongoing work in KOMtech and are intended to stimulate further thoughts and innovations and to showcase some of the many competencies available and being developed in KOMtech. Every attempt has been made to ensure accurate and factual representation of the research presented, however it is important to note that much of this work is ongoing and represents the opinions and views of the authors and not necessarily an official position of KOMtech.

We have enhanced our collaboration with Keppel Business Units, Universities and Industry over the past year and their contribution to our research and to the papers presented in this publication are much appreciated. Technology Review is the result of many of hours of hard work from the authors and editors, and I would like to thank all involved for their hard work and support.

Michael Perry  
Chairman, Editorial Committee

---

### EDITORIAL COMMITTEE :

Advisors	Mr Charles Foo and Dr Foo Kok Seng
Editorial members	Dr Michael Perry, Dr Ronald Chew, Dr Henry Krisdani, Mr Alex Tan, Mr Wayne Yap, Ms Sarah Pang and Ms Wong Chai Yueh (Group Corporate Communications)

---